



Crown Gardens, Mansfield

£1,195 PCM

Introducing Crown Gardens, a stunning new development of 3 and 4 bedroom homes in the growing town of Mansfield.

Welcome to The Renmore, a stunning three-bedroom detached home that embodies modern living.

Step into this exquisite property and be captivated by the elegant central staircase, dividing the space and setting the tone for what lies beyond. The contemporary kitchen-diner is the heart of the home, boasting a sleek design and effortless flow for entertaining. French doors lead to the garden, perfect for hosting dinner parties or enjoying family meals in the sun.

Adjacent to the kitchen-diner is the spacious living room, bathed in natural light through the large windows. The perfect place to relax and unwind with loved ones or indulge in a good book! The under-stairs storage cupboard also keeps living spaces organised and clutter-free.

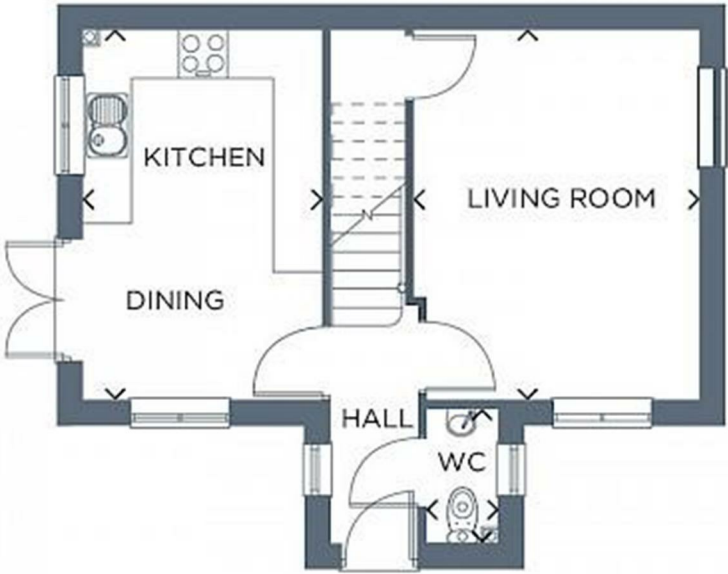
Upstairs, three generously proportioned bedrooms maximise the comfort and tranquility of The Renmore. The family bathroom showcases luxurious fixtures, whilst the master bedroom, with its lavish en-suite bathroom, offers a private sanctuary for relaxation.

Completing this home perfectly is a detached garage, providing secure parking and additional storage options.

Nestled amidst beautiful countryside, this picturesque development offers easy access to the A60 and wider region. While also still being able to enjoy excellent public transport links to Mansfield's centre and beyond.



1 Baird Avenue, Mansfield, NG19 OSD



Energy Efficiency Rating		Environmental Impact (CO ₂) Rating	
Very energy efficient - lower running costs	Score	Very environmentally friendly - lower CO ₂ emissions	Score
<div><div></div><div></div><div></div><div></div><div></div><div></div><div></div></div>	83	<div><div></div><div></div><div></div><div></div><div></div><div></div><div></div></div>	
A		A	
B		B	
C		C	
D		D	
E		E	
F		F	
G		G	
Very energy efficient - higher running costs		Not environmentally friendly - higher CO ₂ emissions	